

ULTRA LEATHER

By Sørensen Leather

Composition

100% protected leather

Fire rating

CAL117: pass
EN 1021 1/2: pass
BS 5852 0,1 C&M: pass
BS 5852 Crib5: pass with treatment

Price group

4

Care instructions

Vacuum frequently with a soft brush. For stains use boiled water with natural soap. Whip 2-3 tablespoons of soap flakes in 1 litre water and only use the foam. Apply the foam with a soft cloth, let it dry and wipe off the leather thoroughly with a soft cotton cloth.

Colour fastness to light

Scale 5-7 (8)

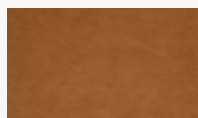
≥ 5 (8)

Pass for

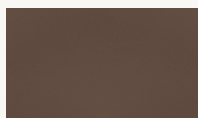
Herman

More information [here](#).

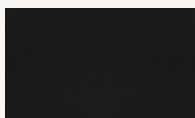
ferm LIVING colour selection (fabric swatches available)



Brandy - 41574

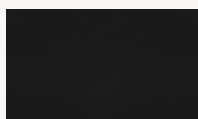


Safari - 41586



Black - 41599

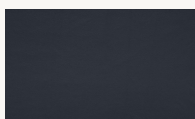
All available colours



Black - 41599



Black Brown - 41590



Navy - 41573



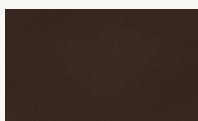
Anthrazite - 41580



Lava - 41575



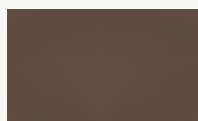
Chocolate - 41589



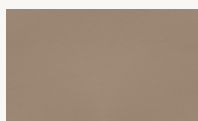
Brown - 41588



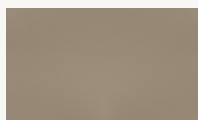
Grey - 41585



Safari - 41586



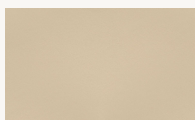
Earth - 41584



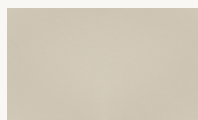
Altweiss - 41576



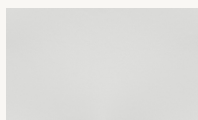
Marble - 41583



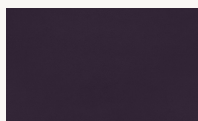
Sand - 41582



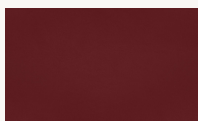
Eggshell - 41581



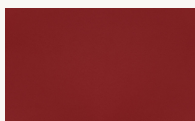
White - 41594



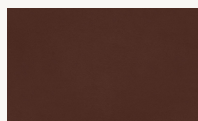
Purple - 41593



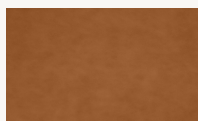
Brick - 41579



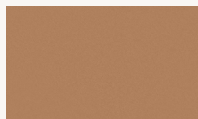
Poppy - 41578



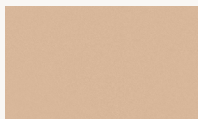
Cognac - 41598



Brandy - 41574



Camel - 41571



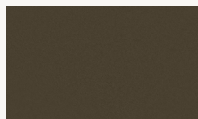
Honey - 41572



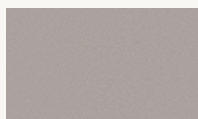
Leaf - 41566



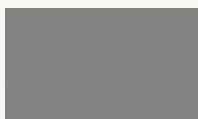
Marsh - 41570



Moss - 41569



Oat - 41568



Smoke - 41567